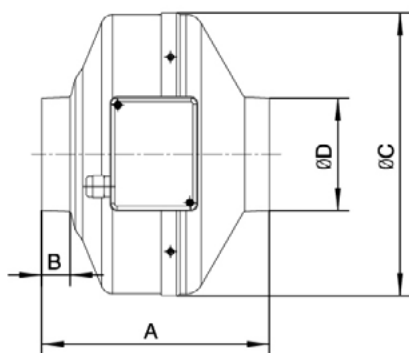
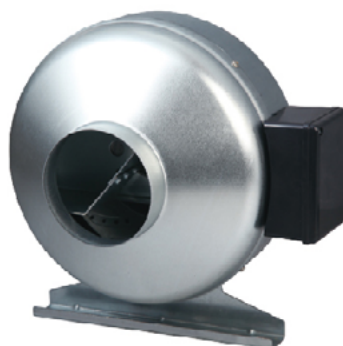


GF 系列管道风机 Duct fans



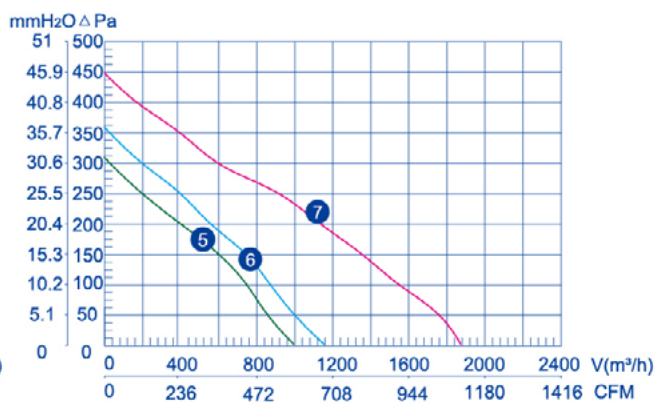
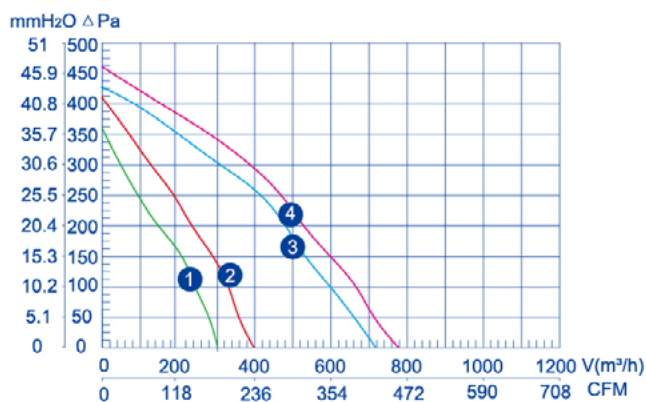
使用说明:

工作方式: S1
 绝缘等级: B级/F级
 环境温度: -25℃~+60℃
 防护等级: IP44

Instructions:

Operation mode: S1
 Insulation class: B/F
 Ambient temperature: -25℃~+60℃
 Type of protection: IP44

规格 Type	A	B	ΦC	ΦD
LXFB2E190/44-P92/15-G100	202	23	243	100
LXFB2E190/44-P92/15-G125	202	27	243	125
LXFB2E220/44-P92/25-G150	222	28	333	150
LXFB2E220/44-P92/25-G160	223	28	333	160
LXFB2E250/48-M92/35-G200	223	25	333	200
LXFB2E250/48-M92/35-G250	206	27	333	250
LXFB2E280/50-M92/45-G315	238	25	401	315



Type 规格	The specification of wheel 风轮规格 mm	Voltage 额定电压 V	Frequency 频率 Hz	Current 额定电流 A	Input power 输入功率 W	Rated speed 额定转速 r/min	Maximum air volume 最大风量 m³/h	Noise level 噪音 dB (A)	Net weight 净重 kg	Curve 曲线
LXFB2E190/44-P92/15-G100	190×44	220	50	0.26	57	2180	290	45	3	①
LXFB2E190/44-P92/15-G125	190×44	220	50	0.26	55	2330	405	47	3	②
LXFB2E220/44-P92/25-G150	220×44	220	50	0.39	85	2460	550	51	5	③
LXFB2E220/44-P92/25-G160	220×44	220	50	0.50	105	2550	580	52	5	④
LXFB2E250/48-M92/35-G200	250×48	220	50	0.69	151	2550	1000	53	5	⑤
LXFB2E250/48-M92/35-G250	250×48	220	50	0.67	147	2580	1105	55	6	⑥
LXFB2E280/50-M92/45-G315	280×50	220	50	0.98	200	2350	1470	56	8	⑦